

Hub
Catalogue



hubsmith



Hubsmith.

+Taipei Cycle d&i Award By iF Products

HS-R049 (2017) - 09
HS-R035 (2015) - 12
HS-R023 (2014) - 11
HS-RWC01 (2012) - 10

+Road Disc Hubs

(Center Lock)
HS-R065 - 16

(6-Bolt/Disc Straight Pull)
HS-R027 - 17

(6-Bolt/Disc Normal Flange)
HS-R041 - 18

+Road Hubs

(Normal Flange)
HS-R001 - 20
HS-R006 - 20
HS-R013 - 21
HS-LR001 (Loose Ball) - 22

(Straight Pull)
HS-R002 - 24
HS-R011 - 24
HS-R032 - 25
HS-R039 - 25
HS-RS39 - 25

(Classical)
HS-R036 - 28
HS-R038 - 28

+Mini Hubs

HS-RS01 - 30
HS-RS02 - 30
HS-RS27(Birdy Disc Spec) - 30
HS-R022(Brompton Spec) - 31
HS-R015(Brompton Spec) - 31
HS-R013(Shimano Capreo System) - 31

+E-Mountain Hubs

(6-Bolt/Straight Pull)
HS-EMB01 - 34

(6-Bolt/Normal Flange)
HS-EMB02 - 34

+MTB Hubs

(All Mountains)
HS-MP01(Center Lock) - 35
HS-M007(6-Bolt) - 36
HS-M016(6-Bolt) - 37

(Center Lock)
HS-M018 - 38
HS-M013 - 39

(Boost)
HS-MB01 - 40
HS-MB02 - 40

(Boost Center Lock Disc)
HS-MB05 - 42
HS-MB06 - 43

(Lefty)
HS-ML01 - 45
HS-ML02 - 45

(Fat Bike)
HS-M009 - 46
HS-M010 - 47

(Down Hill)
HS-M008 - 48

(Trial Bike)
HS-C001R - 48

+Track Hubs

(Normal Flange)
HS-B003 - 50
HS-B009 - 50

(Straight Pull)
HS-B008 - 51

+Freehub Body

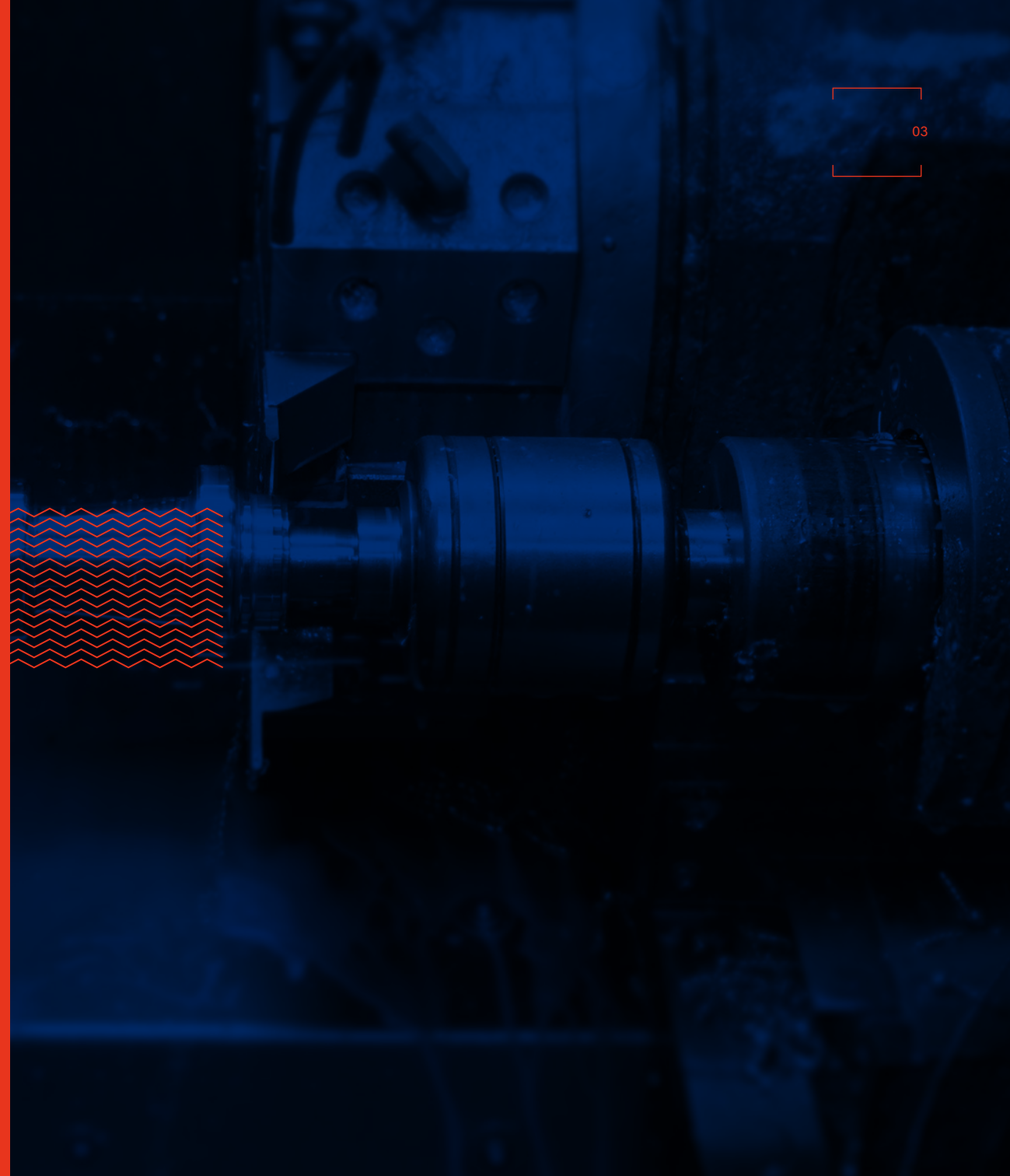
(All Road)
HS-RX4812 - 54
HS-RC4811 - 54
HS-RS4811 - 54
HS-RS4811(Steel Wear Plate) - 54
Titanium Freehub Body - 55

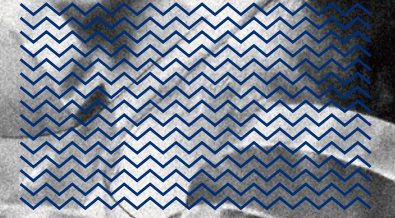
(Shimano Capreo)
HS-RS4808 - 55

(All Mountains)
HS-MS4811 - 55
HS-MX4811 - 55

+Cinch Release
HS-CR007 - 56

Hub Cinch
HS-HCR01F - 57
HS-HCR01R - 57

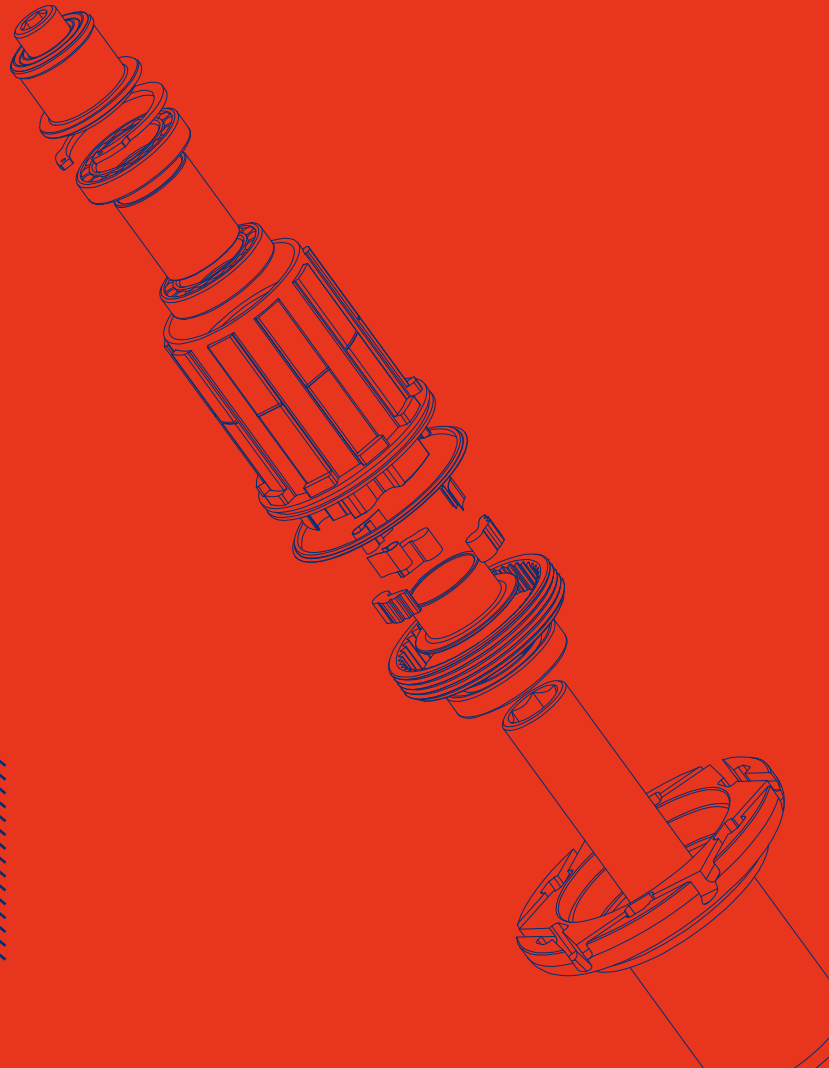




Hubsmith has accumulated nearly 40 year-experience on professional cycle hub technology. Every cyclist riding bike with Hubsmith cycle hubs and wheels all over the world will have a fast and furious Hubsmith cycling life style.

"Hubsmith" is composed of "hub" and "-smith", representing craftsman reappears cycle hub and wheel workmanship.

THE FEATURES OF HUBSMITH CYCLE HUBS



We specialize in the road hub, road disc hub, MTB hub, single speed hub, mini-bike hub, fat bike hub, and trial bike hub. Our products are not only with exclusive patented technologies, but also from 2012 to 2017, there have been four hub sets gained Taipei Cycle d&i awards.





Hubsmith Fusion Spoke Titan series becomes a hot issue when it was launched in the end of 2016. The essence of this wheel set, HS-R049 hub set has even gained 2017 Taipei Cycle d&i awards by iF.

The core tech is to fuse the features from J-bend and the straight-pull spokes instead of building a wheel in traditional single ways. Combining the features of these two kinds of spokes, driving power from J-bend and lateral force from straight-pull spokes, can make you ride a bike more powerfully and turn a corner more steadily.

HS-RWC01F

Spoke Hole : 16/18/20/24 H
Axle Dim. : $\varnothing 9$ (ID5)*100*139mm
Axle O.D. : $\varnothing 10$ mm
Axle Material : Alloy 7075 T6
Hub Material : Alloy 6066 T6
Flange P.C.D. : 31mm
Sealed Cartridge Bearings : 2pcs
Weight : 87g
(No need to use quick release)



HS-RWC01R

Spoke Hole : 16/18/20/24/8-16 H
Axle Dim. : $\varnothing 10$ (ID5)*130*169mm
Axle O.D. : $\varnothing 12$ mm- $\varnothing 15$ mm
Axle Material : Alloy 7075 T6
Hub Material : Alloy 6066 T6
Flange P.C.D. : 35mm/49mm
Sealed Cartridge Bearings : 4pcs
Weight : 221g
(No need to use quick release)



HS-RWC01's patented Hub Cinch (cinch nuts+cinch caps) allow users to safely and securely mount and lock a wheel on any bicycle. Our simple and unique tension gap design distributes pressure on the hub axle to prevent the nut from loosening. No need for bulky release levers or floppy springs that may hinder optimum fit and grip.

Fit our simple and unique design cap (Cinch-Cap) on the hub axle. Tighten the hex screw on the nuts (Cinch-Nut) to increase tension to the cap (Cinch-Cap) thereby locking the axle in place to prevent the nut from loosening.

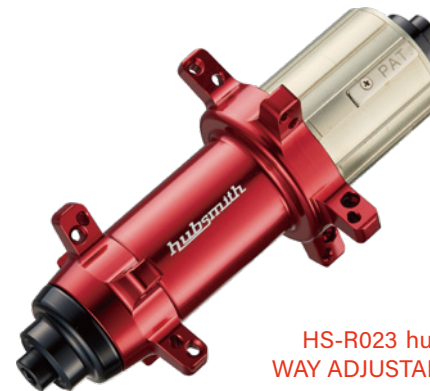
HS-R023F

Spoke Hole : 20 H
Axle Dim. : $\varnothing 9$ (ID5)*100*110mm
Axle O.D. : $\varnothing 17$ mm
Axle Material : Alloy 7075 T6
Hub Material : Alloy 6061 T6
Flange P.C.D. : 36.5/46.2mm
Sealed Cartridge Bearings : 2pcs
Weight : 110g



HS-R023R

Spoke Hole : 20 H
Axle Dim. : $\varnothing 10$ (ID5)*130*140mm
Axle O.D. : $\varnothing 17$ mm - $\varnothing 15$ mm
Axle Material : Alloy 7075 T6
Hub Material : Alloy 6061 T6
Flange P.C.D. : 37.9-47.7/51.9-61.3mm
Sealed Cartridge Bearings : 4pcs
Weight : 216g



HS-R023 hubs fitted with Hubsmith latest patent technology "ONE WAY ADJUSTABLE-GAP SYSTEM!"

After a bike has been ridden for long time, bearings from the hub will gradually be worn, resulting in gaps that can make wheels deflective, and the hub and bearings can also be easily damaged!

This design enables the direct adjustment to gaps through the adjustment ring in the hub, while also extending the life of bearings and the hub.

Through our experience and precision calculations, both HS-R023 front and rear hub require only one specification length of the spokes, which can facilitate customers to build wheels.



HS-R035F
Spoke Hole : 20/24/28 H
Axle Dim. : ø9 (ID5)*100*110mm
Axle O.D. : ø15mm
Axle Material : Alloy 7075 T6
Hub Material : Alloy 6061 T6
Flange P.C.D. : 54mm
Sealed Cartridge Bearings : 2pcs
Weight : 139g (no caps)



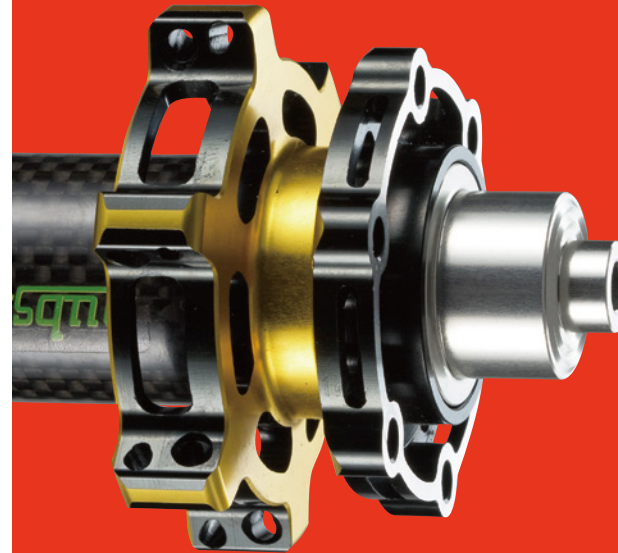
HS-R035R
Spoke Hole : 20/24/28 H
OLD. : 135mm/142mm
Axle O.D. : ø17 mm - ø15mm
Axle Material : Alloy 7075 T6
Hub Material : Alloy 6061 T6
Flange P.C.D. : 54mm/64.5mm
Sealed Cartridge Bearings : 4pcs
Weight : 230g (no caps)

[Choose 1-4 Colors on the hub]



Front (Left & Right) Caps	Weight (2pcs)
5MM	13g
10MM	10.6g
12MM	9.4g

Rear (Left & Right) Caps	Weight (2pcs)
5MM for OLD:135 SHIMANO	16.8g
10MM for OLD:135 SHIMANO	14.4g
12MM for OLD:135 SHIMANO	13.4g
10MM for OLD:142 SHIMANO	18.2g
12MM for OLD:142 SHIMANO	17.2g



Hubsmith HS-R035 can be anodized 1-4 colors on the hub flanges. So each R035 hub will be different, charming and attractive to catch everyone's sight.

HS-R035 road disc hub shell is composed of 1 carbon fiber tube and 2 special hollow design hub flanges to make it not only look so stunning and extremely beautiful but also make it lighter.

The new HS-R035 hubset can perfectly match 5mm or 10, 12mm thru-axle skewers by exchanging the end caps.



ROAD DISC HUBS



HS-R065F
Spoke Hole : 24/28 H
Axle Dim. : $\phi 9$ (ID5)*100
Axle O.D. : $\phi 17$ mm
Axle Material : Alloy 7075 T6
Hub Material : Alloy 6061 T6
Flange P.C.D. : 43mm/36mm
Sealed Cartridge Bearings : 2pcs
Weight : 125g

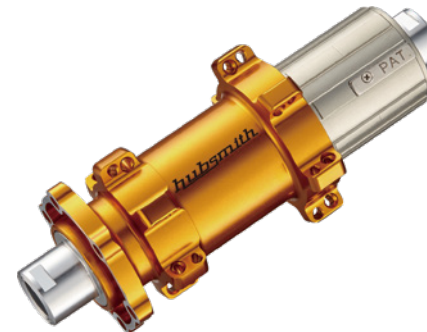
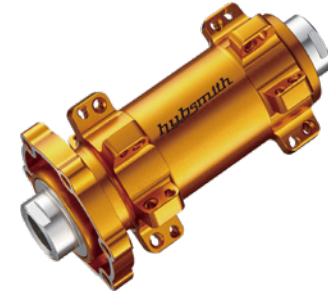


HS-R065R
Spoke Hole : 24/28 H
OLD : 135mm/142mm
Axle O.D. : $\phi 15$ mm
Axle Material : Alloy 7075 T6
Hub Material : Alloy 6061 T6
Flange P.C.D. : 43mm/54mm
Sealed Cartridge Bearings : 4pcs
Weight : 240g

Front (Left & Right) Caps	Weight (1 set)
5MM	13g
9MM	10g
10MM	10.6g
12MM	9.4g

Rear (Left) Cap+Axle	Weight (1set)
5MM for OLD:135 SHIMANO	30g
10MM for OLD:135 SHIMANO	46g
12MM for OLD:135 SHIMANO	33g
10MM for OLD:142 SHIMANO	48g
12MM for OLD:142 SHIMANO	35g

HS-R027F
Spoke Hole : 20/24/28 H
OLD. : 100mm
Axle O.D. : $\phi 12$ mm
Axle Material : Alloy 7075 T6
Hub Material : Alloy 6061 T6
Flange P.C.D. : 41mm/39.6mm
Sealed Cartridge Bearings : 2pcs
Weight : 116g (no caps)



HS-R027R
Spoke Hole : 20/24/28 H
OLD. : 135/142mm
Axle O.D. : $\phi 17$ mm - $\phi 15$ mm
Axle Material : Alloy 7075 T6
Hub Material : Alloy 6061 T6
Flange P.C.D. : 41mm/49mm
Sealed Cartridge Bearings : 4pcs
Weight : 214g (no caps)

Front (Left & Right) Caps	Weight (2pcs)
5MM	13g
10MM	10.6g
12MM	9.4g

Rear (Left & Right) Caps	Weight (2pcs)
5MM for OLD:135 SHIMANO	16.8g
10MM for OLD:135 SHIMANO	14.4g
12MM for OLD:135 SHIMANO	13.4g
10MM for OLD:142 SHIMANO	18.2g
12MM for OLD:142 SHIMANO	17.2g



[Choose 1~4 Colors on the hub]

HS-R041F

Spoke Hole : 16/18/20/24/28/32 H
 OLD. : 100mm
 Axle O.D. : ø12mm
 Axle Material : Alloy 7075 T6
 Hub Material : Alloy 6061 T6
 Flange P.C.D. : 56.5mm/46mm
 Sealed Cartridge Bearings : 2pcs
 Weight : 131g (no caps)



HS-R041R

Spoke Hole : 8-16/18/20/24/28/32 H
 OLD. : 135/142mm
 Axle O.D. : ø17mm - ø15mm
 Axle Material : Alloy 7075 T6
 Hub Material : Alloy 6061 T6
 Flange P.C.D. : 56.5mm
 Sealed Cartridge Bearings : 4pcs
 Weight : 208g (no caps)



Front (Left & Right) Caps	Weight (2pcs)
5MM	14.8g
10MM	10.6g
12MM	6.8g

Rear (Left & Right) Caps	Weight (2pcs)
5MM for OLD:135 SHIMANO	16.1g
10MM for OLD:135 SHIMANO	14.5g
12MM for OLD:135 SHIMANO	13.7g
10MM for OLD:142 SHIMANO	15.5g
12MM for OLD:142 SHIMANO	14.7g



ROAD HUBS



HS-R001F

Spoke Hole : 16/18/20/24 H
Axle Dim. : $\varnothing 9$ (ID5)*100*110mm
Axle O.D. : $\varnothing 10$ mm
Axle Material : Alloy 7075 T6
Hub Material : Alloy 6066 T6
Flange P.C.D. : 31mm
Sealed Cartridge Bearings : 2pcs
Weight : 65g



HS-R001R

Spoke Hole : 8-16/18/20/24/28 H
Axle Dim. : $\varnothing 10$ (ID5)*130*140mm
Axle O.D. : $\varnothing 12$ mm - $\varnothing 15$ mm
Axle Material : Alloy 7075 T6
Hub Material : Alloy 6066 T6
Flange P.C.D. : 35mm/49mm
Sealed Cartridge Bearings : 4pcs
Weight : 191g



HS-R006F

Spoke Hole : 16/18/20/24 H
Axle Dim. : $\varnothing 9$ (ID5)*100*110mm
Axle O.D. : $\varnothing 12$ mm
Axle Material : Alloy 7075 T6
Hub Material : Alloy 6061 T6
Flange P.C.D. : 33mm
Sealed Cartridge Bearings : 2pcs
Weight : 71g



HS-R006R

Spoke Hole : 8-16/18/20/24/28 H
Axle Dim. : $\varnothing 10$ (ID5)*130*140mm
Axle O.D. : $\varnothing 15$ mm
Axle Material : Alloy 7075 T6
Hub Material : Alloy 6061 T6
Flange P.C.D. : 38mm/51mm
Sealed Cartridge Bearings : 4pcs
Weight : 223g



HS-R013R

Spoke Hole : 8-16/18/20/24/28 H
Axle Dim. : $\varnothing 10$ (ID5)*130*140mm
Axle O.D. : $\varnothing 15$ mm
Axle Material : Alloy 7075 T6
Hub Material : Alloy 6066 T6
Flange P.C.D. : 33mm/49mm
Sealed Cartridge Bearings : 4pcs
Weight : 189g



HS-LR001F

Spoke Hole : 16/18/20 H
Axle Dim. : $\varnothing 9$ (ID5)*100*110
Axle O.D. : $\varnothing 12$ mm
Axle Material : Alloy 7075 T6
Hub Material : Alloy 6061 T6
Flange P.C.D. : 39mm
Loose Balls : 2* (5/32"*15pcs)
Weight : 117g



HS-LR001R

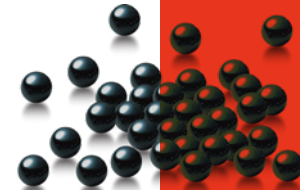
Spoke Hole : 8-16/18/20/24 H
Axle Dim. : $\varnothing 10$ (ID5)*130*140mm
Axle O.D. : $\varnothing 12$ mm
Axle Material : Alloy 7075 T6
Hub Material : Alloy 6061 T6
Flange P.C.D. : 40mm/53mm
Loose Balls : 2* (5/32"*15pcs)
& Bearing *2pcs
Weight : 228g



One Way Adjustable-Gap System

Loose Balls System

Loose Balls System



Loose Balls System

The hub internal steel ball cup and steel cup shield are manufactured precisely of Material -SUJ2 with the Coating of Platinum-Ti (suit for ceramic balls), both can assemble steel balls or ceramic balls.

HS-R002F

Spoke Hole : 20/24 H
Axle Dim. : $\varnothing 9$ (ID5)*100*110mm
Axle O.D. : $\varnothing 10$ mm
Axle Material : Alloy 7075 T6
Hub Material : Alloy 7075 T6
Flange P.C.D. : 22.4mm
Sealed Cartridge Bearings : 2pcs
Weight : 80g



HS-R002R

Spoke Hole : 8-16/24/28 H
Axle Dim. : $\varnothing 10$ (ID5)*130*140mm
Axle O.D. : $\varnothing 12$ mm - $\varnothing 15$ mm
Axle Material : Alloy 7075 T6
Hub Material : Alloy 7075 T6
Flange P.C.D. : 29.4mm/49mm
Sealed Cartridge Bearings : 4pcs
Weight : 235g



HS-R011F

Spoke Hole : 18/20/24 H
Axle Dim. : $\varnothing 9$ (ID5)*100*110mm
Axle O.D. : $\varnothing 15$ mm
Axle Material : Alloy 7075 T6
Hub Material : Alloy 6061 T6
Flange P.C.D. : 29mm
Sealed Cartridge Bearings : 2pcs
Weight : 107g



HS-R011R

Spoke Hole : 20/24 H
Axle Dim. : $\varnothing 10$ (ID5)*130*140mm
Axle O.D. : $\varnothing 15$ mm
Axle Material : Alloy 7075 T6
Hub Material : Alloy 6061 T6
Flange P.C.D. : 33mm/51mm
Sealed Cartridge Bearings : 4pcs
Weight : 219g



HS-R032F (FOR CARBON SPOKES)

Spoke Hole : 18/20/24 H
Axle Dim. : $\varnothing 9$ (ID5)*100*110mm
Axle O.D. : $\varnothing 15$ mm
Axle Material : Alloy 7075 T6
Hub Material : Alloy 6061 T6
Flange P.C.D. : 29.5mm
Sealed Cartridge Bearings : 2pcs
Weight : 107g



HS-R032R (FOR CARBON SPOKES)

Spoke Hole : 7-14/8-16/20/24/28 H
Axle Dim. : $\varnothing 10$ (ID5)*130*140mm
Axle O.D. : $\varnothing 15$ mm
Axle Material : Alloy 7075 T6
Hub Material : Alloy 6061 T6
Flange P.C.D. : 33.4mm/51mm
Sealed Cartridge Bearings : 4pcs
Weight : 219g

HS-RS39F/HS-R039F

Spoke Hole : 20/24/28 H
Axle Dim. : $\varnothing 9$ (ID5)*74/100mm
Axle O.D. : $\varnothing 12$ mm
Axle Material : Alloy 7075 T6
Hub Material : Alloy 6066 T6
Flange P.C.D. : 39.6mm
Sealed Cartridge Bearings : 2pcs
Weight : 94g



HS-R039R

Spoke Hole : 20/24/28 H
Axle Dim. : $\varnothing 10$ (ID5)*130*140mm
Axle O.D. : $\varnothing 17$ mm - $\varnothing 15$ mm
Axle Material : Alloy 7075 T6
Hub Material : Alloy 6061 T6
Flange P.C.D. : 41mm/49mm
Sealed Cartridge Bearings : 4pcs
Weight : 221g





HS-R036F

Spoke Hole : 32 H
Axle Dim. : $\varnothing 9$ (ID5)*100*110mm
Axle O.D. : $\varnothing 10$ mm
Axle Material : Alloy 7075 T6
Hub Material : Alloy 6061 T6
Flange P.C.D. : 91mm
Sealed Cartridge Bearings : 2pcs
Weight : 159g



HS-R036R

Spoke Hole : 32 H
Axle Dim. : $\varnothing 10$ (ID5)*130*140mm
Axle O.D. : $\varnothing 12$ mm - $\varnothing 15$ mm
Axle Material : Alloy 7075 T6
Hub Material : Alloy 6061 T6
Flange P.C.D. : 91mm
Sealed Cartridge Bearings : 4pcs
Weight : 263g



HS-R038F

Spoke Hole : 20/24/28/32/36 H
Axle Dim. : $\varnothing 9$ (ID5)*100*110mm
Axle O.D. : $\varnothing 10$ mm
Axle Material : Alloy 7075 T6
Hub Material : Alloy 6061 T6
Flange P.C.D. : 61.5mm
Sealed Cartridge Bearings : 2pcs
Weight : 118g



HS-R038R

Spoke Hole : 20/24/28/32/36 H
Axle Dim. : $\varnothing 10$ (ID5)*130*140mm
Axle O.D. : $\varnothing 12$ mm
Axle Material : Alloy 7075 T6
Hub Material : Alloy 6061 T6
Flange P.C.D. : 61.5mm
Sealed Cartridge Bearings : 4pcs
Weight : 231g



MINI HUBS



HS-RS01F

Spoke Hole : 14/16/18/20/24/28 H
Axle Dim. : $\varnothing 9$ (ID5) or $\varnothing 8$ (ID5) for Brompton *74*84mm
Axle O.D. : $\varnothing 10$ mm
Axle Material : Alloy 7075 T6
Hub Material : Alloy 6066 T6
Flange P.C.D. : 31mm
Sealed Cartridge Bearings : 2pcs
Weight : 57g



HS-RS02F

Spoke Hole : 14/16/18/20/24/28 H
Axle Dim. : $\varnothing 9$ (ID5)*74*84mm
Axle O.D. : $\varnothing 10$ mm
Axle Material : Alloy 7075 T6
Hub Material : Alloy 7075 T6
Flange P.C.D. : 22mm
Sealed Cartridge Bearings : 2pcs
Weight : 61g



HS-RS27F

Spoke Hole : 20/24/28 H
Axle Dim. : $\varnothing 9$ (ID5)*100*110mm/ $\varnothing 9$ (ID5)*74*84mm
Axle O.D. : $\varnothing 12$ mm
Axle Material : Alloy 7075 T6
Hub Material : Alloy 6061 T6
Flange P.C.D. : 41mm
Sealed Cartridge Bearings : 2pcs
Weight : 118g/113g (FOR BIRDY DISC)



HS-R022R

Spoke Hole : 7-14/8-16/16/18/20/24/28/32/36H
Axle Dim. : M10*112*154mm
Axle O.D. : $\varnothing 10$ mm
Axle Material : Alloy 7075 T6
Hub Material : Alloy 6061 T6
Flange P.C.D. : 51mm
Sealed Cartridge Bearings : 4pcs
Weight : 230g (FOR BROMPTON)



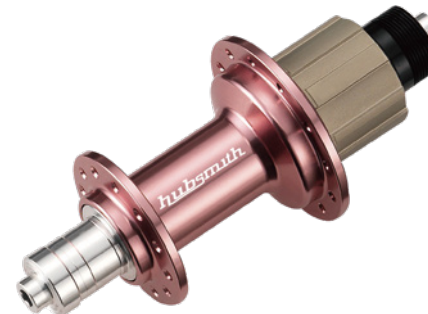
HS-R015R

Spoke Hole : 7-14/8-16/16/18/20/24/28/32/36H
Axle Dim. : M10*112*154mm
Axle O.D. : $\varnothing 10$ mm
Axle Material : Alloy 7075 T6
Hub Material : Alloy 6061 T6
Flange P.C.D. : 51mm
Sealed Cartridge Bearings : 4pcs
Weight : 227g (FOR BROMPTON)



HS-R013R(CAPREO)

Spoke Hole : 7-14/8-16/16/18/20/24/28/32/36H
Axle Dim. : $\varnothing 10$ (ID5)*130*140mm
Axle O.D. : $\varnothing 15$ mm
Axle Material : Alloy 7075 T6
Hub Material : Alloy 6066 T6
Flange P.C.D. : 39mm/49mm
Sealed Cartridge Bearings : 4pcs
Weight : 195g





32



33

hubsmith
E-MOUNTAIN HUBS
hubsmith



HS-EMB01R

Spoke Hole : 24/28/32 H
 OLD. : 148mm
 Axle I.D. : ϕ 12mm
 Axle Material : Alloy 7075 T6
 Hub Material : Alloy 6066 T6
 Flange P.C.D. : 47mm/53mm
 Sealed Cartridge Bearings : 4pcs
 Weight : 298g (The material of E-Hub cassette body is SCM415)



HS-EMB02R

Spoke Hole : 24/28/32/36 H
 OLD. : 148mm
 Axle I.D. : ϕ 12mm
 Axle Material : Alloy 7075 T6
 Hub Material : Alloy 6061 T6
 Flange P.C.D. : 58mm
 Sealed Cartridge Bearings : 4pcs
 Weight : 294g (The material of E-Hub cassette body is SCM415)

HS-MP01F
 Spoke Hole : 24/28/32 H
 OLD. : 100mm
 Axle O.D. : ϕ 15mm
 Axle Material : Alloy 7075 T6
 Hub Material : Alloy 6066 T6
 Flange P.C.D. : 56.5mm/41mm
 Sealed Cartridge Bearings : 2pcs
 Weight : 132g (NO CAPS)



HS-MP01R

Spoke Hole : 24/28/32/36 H
 OLD. : 135mm/142mm
 Axle O.D. : ϕ 15mm
 Axle Material : Alloy 7075 T6
 Hub Material : Alloy 6066 T6
 Flange P.C.D. : 56.5mm
 Sealed Cartridge Bearings : 4pcs
 Weight : 234g (NO CAPS)

Front (Left&Right) Caps	Weight (2pcs)
5MM	20.2g
9MM	17.2g
12MM	10g
15MM	6.8g

Rear (Left&Right) Caps	Weight (2pcs)
5MM for OLD.135 SHIMANO	13.5g
5MM for OLD.135 SRAM-XX1	17g
10MM for OLD.135 SHIMANO	11g
10MM for OLD.135 SRAM-XX1	14.5g
10MM for OLD.142 SHIMANO	14.6g
10MM for OLD.142 SRAM-XX1	18.1g
12MM for OLD.135 SHIMANO	10.6g
12MM for OLD.135 SRAM-XX1	14.1g
12MM for OLD.142 SHIMANO	13.4g
12MM for OLD.142 SRAM-XX1	16.9g

HS-M007F

Spoke Hole : 24/28 H
OLD. : 100mm
Axle O.D. : ø15mm
Axle Material : Alloy 7075 T6
Hub Material : Alloy 6061 T6
Flange P.C.D. : 49mm/55mm
Sealed Cartridge Bearings : 2pcs
Weight : 142g (NO CAPS)



HS-M007R

Spoke Hole : 24/28 H
OLD. : 135mm/142mm
Axle O.D. : ø15mm
Axle Material : Alloy 7075 T6
Hub Material : Alloy 6061 T6
Flange P.C.D. : 49mm/55mm
Sealed Cartridge Bearings : 4pcs
Weight : 256.5g (NO CAPS)



Rear (Left&Right) Caps	Weight (2pcs)
5MM for OLD:135 SHIMANO	13.5g
5MM for OLD:135 SRAM-XX1	17g
10MM for OLD:135 SHIMANO	11g
10MM for OLD:135 SRAM-XX1	14.5g
10MM for OLD:142 SHIMANO	14.6g
10MM for OLD:142 SRAM-XX1	18.1g
12MM for OLD:135 SHIMANO	10.6g
12MM for OLD:135 SRAM-XX1	14.1g
12MM for OLD:142 SHIMANO	13.4g
12MM for OLD:142 SRAM-XX1	16.9g

Front (Left&Right) Caps	Weight (2pcs)
5MM	20.2g
9MM	17.2g
12MM	10g
15MM	6.8g

HS-M016F

Spoke Hole : 24/28/32/36 H
OLD. : 100mm
Axle O.D. : ø17mm
Axle Material : Alloy 7075 T6
Hub Material : Alloy 7075 T6
Flange P.C.D. : 54.5mm
Sealed Cartridge Bearings : 2pcs
Weight : 120g



HS-M016R

Spoke Hole : 24/28/32/36 H
OLD. : 135mm/142mm
Axle O.D. : ø17mm
Axle Material : Alloy 7075 T6
Hub Material : Alloy 7075 T6
Flange P.C.D. : 54.5mm
Sealed Cartridge Bearings : 4pcs
Weight : 218g



HS-M018F
Spoke Hole : 24/28/32/36 H
Axle Dim. : 100mm
Axle O.D. : $\phi 17-\phi 15$ mm
Axle Material : Alloy 7075 T6
Hub Material : Alloy 6061 T6
Flange P.C.D. : 58mm/58mm
Sealed Cartridge Bearings : 2pcs
Weight : 115g (NO CAPS)



HS-M013F
Spoke Hole : 24/28 H
Axle Dim. : $\phi 9$ (ID5)*100*110mm
Axle O.D. : $\phi 15$ mm
Axle Material : Alloy 7075 T6
Hub Material : Alloy 6061 T6
Flange P.C.D. : 40mm/40mm
Sealed Cartridge Bearings : 2pcs
Weight : 121g (NO CAPS)



HS-M018R
Spoke Hole : 24/28/32/36 H
Axle Dim. : $\phi 10$ (ID5)*135mm/142mm
Axle O.D. : $\phi 17$ mm
Axle Material : Alloy 7075 T6
Hub Material : Alloy 6061 T6
Flange P.C.D. : 58mm/58mm
Sealed Cartridge Bearings : 4pcs
Weight : 223g (NO CAPS)



HS-M013R
Spoke Hole : 24/28 H
Axle Dim. : $\phi 10$ (ID5)*135*145mm
Axle O.D. : $\phi 15$ mm
Axle Material : Alloy 7075 T6
Hub Material : Alloy 6061 T6
Flange P.C.D. : 40mm/54mm
Sealed Cartridge Bearings : 4pcs
Weight : 222g (NO CAPS)

Front (Left&Right) Caps	Weight (2pcs)
5MM	16.7g
10MM	13.5g
12MM	12.3g

Rear (Left&Right) Caps	Weight (2pcs)
5MM for OLD.135 SHIMANO	19.2g
10MM for OLD.135 SHIMANO	16.1g
12MM for OLD.135 SHIMANO	14.9g
10MM for OLD.142 SHIMANO	19.8g
12MM for OLD.142 SHIMANO	18.6g

Front (Left&Right) Caps	Weight (2pcs)
5MM	16.7g
10MM	13.5g
12MM	12.3g

Rear (Left&Right) Caps	Weight (2pcs)
5MM for OLD.135 SHIMANO	19.2g
10MM for OLD.135 SHIMANO	16.1g
12MM for OLD.135 SHIMANO	14.9g
10MM for OLD.142 SHIMANO	19.8g
12MM for OLD.142 SHIMANO	18.6g

HS-MB01F

Spoke Hole : 28/32 H
OLD. : 110mm
Axle I.D. : ϕ 15mm
Axle Material : Alloy 7075 T6
Hub Material : Alloy 6061 T6
Flange P.C.D. : 47mm
Sealed Cartridge Bearings : 2pcs
Weight : 187g



HS-MB01R

Spoke Hole : 28/32 H
OLD. : 148mm
Axle I.D. : ϕ 12mm
Axle Material : Alloy 7075 T6
Hub Material : Alloy 6061 T6
Flange P.C.D. : 47mm/53mm
Sealed Cartridge Bearings : 4pcs
Weight : 279g



HS-MB02F

Spoke Hole : 28/32/36 H
OLD. : 110mm
Axle I.D. : ϕ 15mm
Axle Material : Alloy 7075 T6
Hub Material : Alloy 6061 T6
Flange P.C.D. : 58mm
Sealed Cartridge Bearings : 2pcs
Weight : 181g



HS-MB02R

Spoke Hole : 28/32/36 H
OLD. : 148mm
Axle I.D. : ϕ 12mm
Axle Material : Alloy 7075 T6
Hub Material : Alloy 6061 T6
Flange P.C.D. : 58mm
Sealed Cartridge Bearings : 4pcs
Weight : 274g



BOOST CENTER LOCK DISC HUBS



HS-MB05F

Spoke Hole : 24/28/32 H
O.L.D. : 110mm
Axle O.D. : \varnothing 20mm
Axle Material : Alloy 7075 T6
Hub Material : Alloy 6061 T6
Flange P.C.D. : 47mm
Sealed Cartridge Bearings : 2pcs
Weight : 171g



HS-MB06F

Spoke Hole : 24/28/32/36 H
O.L.D. : 110mm
Axle O.D. : \varnothing 20mm
Axle Material : Alloy 7075 T6
Hub Material : Alloy 6061 T6
Flange P.C.D. : 58mm
Sealed Cartridge Bearings : 2pcs
Weight : 168g



HS-MB05R

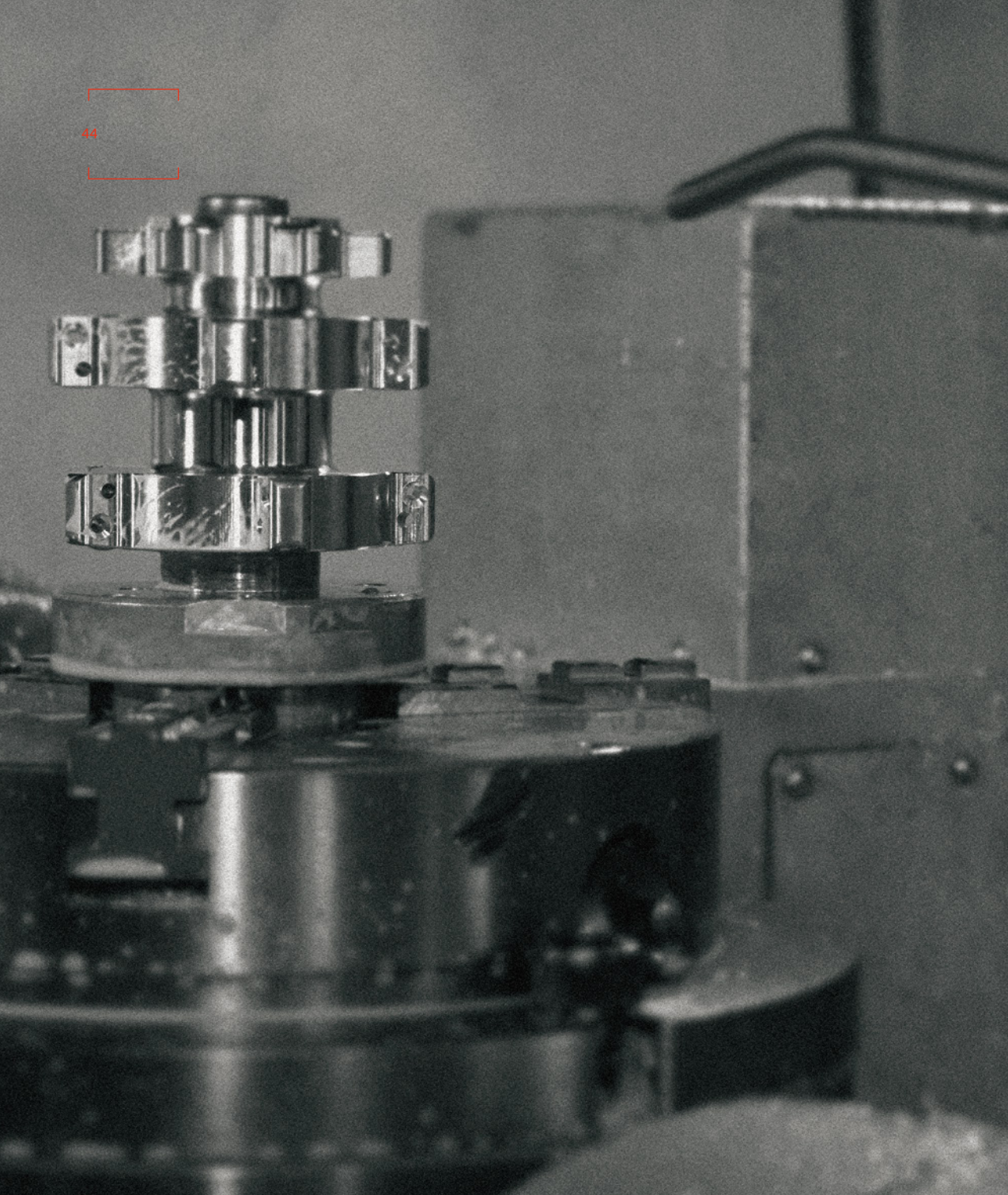
Spoke Hole : 24/28/32 H
O.L.D. : 148mm
Axle O.D. : \varnothing 15mm
Axle Material : Alloy 7075 T6
Hub Material : Alloy 6061 T6
Flange P.C.D. : 47mm/58mm
Sealed Cartridge Bearings : 4pcs
Weight : 272g



HS-MB06R

Spoke Hole : 24/28/32/36 H
O.L.D. : 148mm
Axle O.D. : \varnothing 15mm
Axle Material : Alloy 7075 T6
Hub Material : Alloy 6061 T6
Flange P.C.D. : 58mm
Sealed Cartridge Bearings : 4pcs
Weight : 274g



**HS-ML01F**

Spoke Hole : 28/32 H
 OLD. : 100mm
 Axle O.D. : ϕ 12mm
 Axle Material : Alloy 7075 T6
 Hub Material : Alloy 6061 T6
 Flange P.C.D. : 58mm/45mm
 Sealed Cartridge Bearings : 2pcs (6805;6902)
 Weight : 128g (NO CAPS)

**HS-ML02F**

Spoke Hole : 28/32 H
 OLD. : 110mm
 Axle O.D. : ϕ 15mm
 Axle Material : Alloy 7075 T6
 Hub Material : Alloy 6061 T6
 Flange P.C.D. : 58mm/45mm
 Sealed Cartridge Bearings : 2pcs (6805;6902)
 Weight : 130g (NO CAPS)



HS-M009F

Spoke Hole : 24/28/32/36 H
 OLD. : (ID5)*135*145mm;
 (ID9)*135*135mm;
 (ID15)*135*135mm
 Axle O.D. : ϕ 15mm
 Axle Material : Alloy 7075 T6
 Hub Material : Alloy 6061 T6
 Flange P.C.D. : 56.5mm
 Sealed Cartridge Bearings : 2pcs
 Weight : 188g (NO CAPS)



HS-M009R

Spoke Hole : 24/28/32/36 H
 OLD. : (ID10)*170*170mm;
 (ID12)*170*170mm
 Axle O.D. : ϕ 15mm
 Axle Material : Alloy 7075 T6
 Hub Material : Alloy 6061 T6
 Flange P.C.D. : 56.5mm
 Sealed Cartridge Bearings : 5pcs
 Weight : 271g (NO CAP & AXLE)



HS-M010F

Spoke Hole : 24/28/32/36 H
 OLD. : (ID5)*150*160mm;
 (ID9)*150*150mm;
 (ID15)*150*150mm
 Axle O.D. : ϕ 15mm
 Axle Material : Alloy 7075 T6
 Hub Material : Alloy 6061 T6
 Flange P.C.D. : 56.5mm
 Sealed Cartridge Bearings : 2pcs
 Weight : 201g (NO CAPS)



HS-M010R

Spoke Hole : 24/28/32/36 H
 OLD. : (ID10)*190*190mm;
 (ID12)*190*190mm;
 (ID10)*197*197mm;
 (ID12)*197*197mm
 Axle O.D. : ϕ 15mm
 Axle Material : Alloy 7075 T6
 Hub Material : Alloy 6061 T6
 Flange P.C.D. : 56.5mm
 Sealed Cartridge Bearings : 5pcs
 Weight : 287g (NO CAP & AXLE)



Front (Left&Right) Caps	Weight (2pcs)
5MM	19.8g
9MM	17g
15MM	6.4g

Rear (Left) Cap+Axle	Weight (1 set)
10MM for OLD:170 SHIMANO	61.2g
10MM for OLD:170 SRAM-XX1	64.4g
12MM for OLD:170 SHIMANO	44g
12MM for OLD:170 SRAM-XX1	47.2g

Front (Left&Right) Caps	Weight (2pcs)
5MM	19.8g
9MM	17g
15MM	6.4g

Rear (Left) Cap+Axle	Weight (1 set)
10MM for OLD:190 SHIMANO	66.6g
10MM for OLD:190 SRAM-XX1	69.8g
12MM for OLD:190 SHIMANO	47.5g
12MM for OLD:190 SRAM-XX1	50.7g
10MM for OLD:197 SHIMANO	70g
10MM for OLD:197 SRAM-XX1	73.2g
12MM for OLD:197 SHIMANO	50.6g
12MM for OLD:197 SRAM-XX1	53.8g

MTB Hubs
Down Hill
48

HS-M008F
Spoke Hole : 32/36 H
O.L.D. : 100mm
Axle O.D. : ϕ 20mm
Axle Material : Alloy 7075 T6
Hub Material : Alloy 6061 T6
Flange P.C.D. : 58mm
Sealed Cartridge Bearings : 2pcs
Weight : 192g (NO CAPS)



HS-M008R
Spoke Hole : 32/36 H
O.L.D. : 135mm/142mm
Axle O.D. : ϕ 15mm
Axle Material : Alloy 7075 T6
Hub Material : Alloy 6061 T6
Flange P.C.D. : 56.5mm
Sealed Cartridge Bearings : 4pcs
Weight : 234g (NO CAPS)

MTB Hubs
Trial Bike



HS-C001R
Spoke Hole : 24/28/32/36 H
Axle Dim. : ϕ 10(ID5)*135*145mm
Axle O.D. : ϕ 15mm
Axle Material : Alloy 7075 T6
Hub Material : Alloy 6061 T6
Flange P.C.D. : 56.5mm
Sealed Cartridge Bearings : 4pcs
Weight : 294g

Track Hubs



HS-B003F

Spoke Hole : 28/32/36 H
Axle Dim. : M9*100*140mm
Axle Material : SCM415
Hub Material : Alloy 6061 T6
Flange P.C.D. : 61.5mm
Sealed Cartridge Bearings : 2pcs
Weight : 240g



HS-B003R

Spoke Hole : 28/32/36 H
Axle Dim. : M10*120*175mm
Axle Material : SCM415
Hub Material : Alloy 6061 T6
Flange P.C.D. : 61.5mm
Sealed Cartridge Bearings : 2pcs
Weight : 313g



HS-B009F

Spoke Hole : 28/32/36 H
Axle Dim. : M9*100*140mm
Axle Material : SCM415
Hub Material : Alloy 6061 T6
Flange P.C.D. : 91mm
Sealed Cartridge Bearings : 2pcs
Weight : 260g



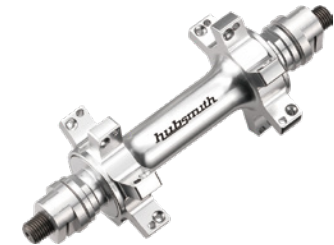
HS-B009R

Spoke Hole : 28/32/36 H
Axle Dim. : M10*120*175mm
Axle Material : SCM415
Hub Material : Alloy 6061 T6
Flange P.C.D. : 91mm
Sealed Cartridge Bearings : 2pcs
Weight : 318g



HS-B008F

Spoke Hole : 20/24/28 H
Axle Dim. : M9*100*140mm
Axle Material : Alloy 7075 T6
Hub Material : Alloy 6061 T6
Flange P.C.D. : 44.8mm
Sealed Cartridge Bearings : 2pcs
Weight : 141g
(NOT FOR BMX BIKE)



HS-B008R

Spoke Hole : 20/24/28 H
Axle Dim. : M10*120*175mm
Axle Material : Alloy 7075 T6
Hub Material : Alloy 6061 T6
Flange P.C.D. : 46mm
Sealed Cartridge Bearings : 2pcs
Weight : 215g
(NOT FOR BMX BIKE)





Freehub Body



3 Clicks Design on Each Pawl

A patented design of Hubsmith. This patented design can help the body to convey the driving force more accurately and instantly. (48 engagements in ratchet rim with 3 pawls X 3 clicks on each pawl). For MTB, it will be 4 pawls X 3 clicks on each pawl.



HS-RX4812	
With 48 Teeth / 3 Pawls / 9 Clicks	
Material	Alloy 7075 (Hard anode)
System	SRAM XDR ROAD 12SP



HS-RC4811	
With 48 Teeth / 3 Pawls / 9 Clicks	
Material	Alloy 7075 (Hard anode)
System	CAMPY 11SP



TITANIUM FREEHUB BODY	
With 48 Teeth / 3 Pawls / 9 Clicks	
Material	Titanium
System	SHIMANO 11SP (with spacer)



HS-RS4808	
With 48 Teeth / 3 Pawls / 9 Clicks	
Material	Alloy 7075 (Hard anode)
System	SHIMANO CAPREO 8/9SP



HS-RS4811	
With 48 Teeth / 3 Pawls / 9 Clicks	
Material	Alloy 7075 (Hard anode)
System	SHIMANO 11SP (with spacer)



HS-RS4811 (Steel Wear Plate)	
With 48 Teeth / 3 Pawls / 9 Clicks	
Material	Alloy 7075 (Hard anode)
System	SHIMANO 11SP



HS-MS4811	
With 48 Teeth / 4 Pawls / 12 Clicks	
Material	Alloy 7075 (Hard anode)
System	SHIMANO 10/11SP



HS-MX4811	
With 48 Teeth / 4 Pawls / 12 Clicks	
Material	Alloy 7075 (Hard anode)
System	SRAM-XX1



HS-CR007, Hubsmith cinch release is assembled with Hubsmith patented cinch-nuts.

When wheel sets are installed on the bike frames with HS-CR007, the cinch nut will be fastened on the fork by lateral fixed screw at the end of the left cinch nut. And it could prevent from loosened wheels in order to achieve security.

HS-CR007			
CR-MO(F)	29g	CR-MO(R)	34g
Ti(F)	19g	Ti(R)	22g

HUB CINCH is composed of Cinch-Nuts and Cinch-Caps. After replacing the original hub caps with Hubsmith Cinch-Caps, screw the Cinch-Nuts on the Cinch-Caps and tighten the hex screw on the nuts to make the Cinch-Nuts tightly bite on the teeth of the Cinch-Caps in order to lock the axle in place to prevent the nut from loosening.

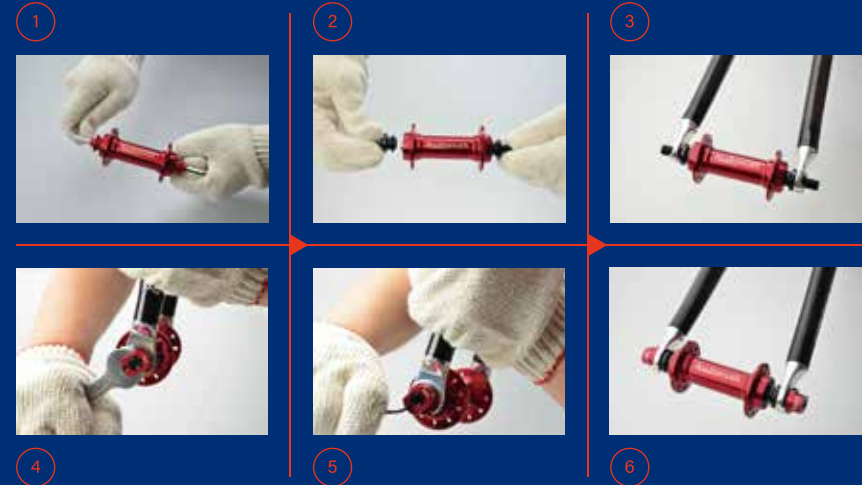
Simple-Fast-Secure! Hubsmith's patented HUB CINCH allows users to safely and securely mount and lock a wheel on any bicycle. No need for bulky general quick release!



HS-HCR01F (For Road Front Hub)	
Material	Alloy 7075-T6 Thread : M9*1.0
Weight	25g/set

HS-HCR01R (For Road Rear Hub)	
Material	Alloy 7075-T6 Thread : M10*1.0
Weight	31g/set

Step 1	Step 2
Using the hex wrench to disassemble the original side caps.	Tighten the Cinch-Caps on the hub axle. (Please ensure the caps are tightened up)
Step 3	Step 4
Mount the hub fitted with Cinch-Caps on fork or fram and slightly screw the Cinch-Nuts on the Cinch-Caps.	Use open wrench to lock Cinch-Nuts on fork or frame. (Please ensure to tighten them up)
Step 5	Step 6
Use the hex wrench to lock the screw into the Cinch-Nut. (Please ensure to tighten it up)	Finish!(No need for bulky quick release!)



hubsmith.



#hubsmith

📍 No.808, Sec7, Hanxi E. Rd., Fengyuan Dist., Taichung City 420, Taiwan

☎ +886-4-25379168 📠 +886-4-25379808

✉ clf@hubsmith.com (oversea sales) / hubsmith.taiwan@gmail.com



hubsmith.com

